

L050 — 3/8" (9.525mm)

規 格	型 號	錐孔型號	齒 數									重 量
SPCFCTN	TYPE	BUSH	Z	Dp	De	Df	Dm	Di	F	S	R	Kg
B18L050F	8FB	1108	18	54.57	53.81	60	43	—	19.0	22.0	3	0.2
B19L050F	8FB	1108	19	57.61	56.84	63	43	—	19.0	22.0	3	0.2
B20L050F	8FB	1108	20	60.64	59.88	67	48	—	19.0	22.0	3	0.2
B21L050F	8FB	1108	21	63.67	62.91	70	48	—	19.0	22.0	3	0.3
B22L050F	8FB	1108	22	66.70	65.94	75	51	—	19.0	22.0	3	0.3
B23L050F	8FB	1108	23	69.73	68.97	79	54	—	19.0	22.0	3	0.4
B24L050F	8FB	1108	24	72.77	72.00	79	54	—	19.0	22.0	3	0.4
B25L050F	8FB	1108	25	75.80	75.04	87	56	—	19.0	22.0	3	0.5
B26L050F	8FB	1108	26	78.83	78.07	87	60	—	19.0	22.0	3	0.5
B27L050F	8FB	1108	27	81.86	81.10	91	65	—	19.0	22.0	3	0.6
B28L050F	8FB	1108	28	84.89	84.13	91	65	—	19.0	22.0	3	0.6
B30L050F	8FB	1108	30	90.96	90.20	97	70	—	19.0	22.0	3	0.8
B32L050F	8FB	1108	32	97.02	96.26	102	74	—	19.0	22.0	3	0.9
B36L050F	8FB	1108	36	109.15	108.39	120	87	—	19.0	22.0	3	1.2
B40L050F	8FB	1210	40	121.28	120.51	128	87	—	19.0	25.0	6	1.5
B48L050F	8FW	1210	48	145.53	144.77	150	88	124	19.0	25.0	6	2.3
B60L050	7B	1610	60	181.91	181.15	—	92	166	19.0	25.0	3	2.0
B72L050	7A	1610	72	218.30	217.53	—	92	202	19.0	25.0	3	3.0
B84L050	7A	1610	84	254.68	253.90	—	106	236	19.0	25.0	3	4.0
B96L050	7A	2012	96	291.06	290.30	—	106	270	19.0	32.0	6.5	5.5
B120L050	7A	2012	120	363.83	363.07	—	106	343	19.0	32.0	6.5	6.8

L075 — 3/8" (9.525mm)

規 格	型 號	錐孔型號	齒 數									重 量
SPCFCTN	TYPE	BUSH	Z	Dp	De	Df	Dm	Di	F	S	R	Kg
B18L075F	1FB	1108	18	54.57	53.81	60	—	—	25.0	25.0	—	0.2
B19L075F	1FB	1108	19	57.61	56.84	63	—	—	25.0	25.0	—	0.3
B20L075F	1FB	1108	20	60.64	59.88	67	—	—	25.0	25.0	—	0.3
B21L075F	1FB	1108	21	63.67	62.91	70	—	—	25.0	25.0	—	0.4
B22L075F	1FB	1108	22	66.70	65.94	75	—	—	25.0	25.0	—	0.4
B23L075F	1FB	1108	23	69.73	68.97	79	—	—	25.0	25.0	—	0.4
B24L075F	1FB	1108	24	72.77	72.00	79	—	—	25.0	25.0	—	0.5
B25L075F	1FB	1108	25	75.80	75.04	87	—	—	25.0	25.0	—	0.6
B26L075F	1FB	1108	26	78.83	78.07	87	—	—	25.0	25.0	—	0.6
B27L075F	1FB	1108	27	81.86	81.10	91	—	—	25.0	25.0	—	0.7
B28L075F	1FB	1108	28	84.89	84.13	91	—	—	25.0	25.0	—	0.7
B30L075F	1FB	1108	30	90.96	90.20	97	—	—	25.0	25.0	—	0.9
B32L075F	1FB	1108	32	97.02	96.26	102	—	—	25.0	25.0	—	1.0
B36L075F	1FB	1210	36	109.15	108.39	120	—	—	25.0	25.0	—	1.2
B40L075F	1FB	1210	40	121.28	120.51	128	—	—	25.0	25.0	—	1.7
B48L075F	3FB	1610	48	145.53	144.77	150	92	125	25.0	25.0	—	2.5
B60L075F	3B	1610	60	181.91	181.15	—	92	166	25.0	25.0	—	3.0
B72L075	3A	1610	72	218.30	217.53	—	92	202	25.0	25.0	—	4.0
B84L075	7A	2012	84	254.68	253.90	—	106	236	25.0	32.0	3.5	5.2
B96L075	7A	2012	96	291.06	290.30	—	106	270	25.0	32.0	3.5	6.5
B120L075	7A	2012	120	363.83	363.07	—	106	343	25.0	32.0	3.5	7.6

L100 — 3/8" (9.525mm)

規 格	型 號	錐孔型號	齒 數									重 量
SPCFCTN	TYPE	BUSH	Z	Dp	De	Df	Dm	Di	F	S	R	Kg
B18L100F	5FB	1108	18	54.57	53.81	60	—	38	31.0	22.0	9.0	0.2
B19L100F	5FB	1108	19	57.61	56.84	63	—	38	31.0	22.0	9.0	0.3
B20L100F	5FB	1108	20	60.64	59.88	67	—	45	31.0	22.0	9.0	0.4
B21L100F	5FB	1108	21	63.67	62.91	70	—	47	31.0	22.0	9.0	0.4
B22L100F	5FB	1108	22	66.70	65.94	75	—	51	31.0	22.0	9.0	0.4
B23L100F	5FB	1108	23	69.73	68.97	79	—	54	32.0	22.0	10.0	0.5
B24L100F	5FB	1108	24	72.77	72.00	79	—	54	32.0	22.0	10.0	0.6
B25L100F	5FB	1108	25	75.80	75.04	87	—	56	32.0	22.0	10.0	0.6
B26L100F	5FB	1108	26	78.83	78.07	87	—	60	32.0	22.0	10.0	0.7
B27L100F	5FB	1108	27	81.86	81.10	91	—	62	32.0	22.0	10.0	0.8
B28L100F	5FB	1108	28	84.89	84.13	91	—	65	32.0	22.0	10.0	0.8
B30L100F	5FB	1210	30	90.96	90.20	97	—	71	32.0	25.0	7.0	0.9
B32L100F	5FB	1210	32	97.02	96.26	102	—	75	32.0	25.0	7.0	1.0
B36L100F	5FB	1210	36	109.15	108.39	120	—	89	32.0	25.0	7.0	1.4
B40L100F	5FB	1610	40	121.28	120.51	128	—	101	32.0	25.0	7.0	1.7
B48L100F	5FW	1610	48	145.53	144.77	150	92	124	32.0	25.0	7.0	2.7
B60L100	9B	1610	60	181.91	181.15	—	92	166	32.0	25.0	3.5	2.4
B72L100	3A	2012	72	218.30	217.53	—	106	202	32.0	32.0	—	4.4
B84L100	3A	2012	84	254.68	253.90	—	106	236	32.0	32.0	—	6.0
B96L100	3A	2012	96	291.06	290.30	—	106	270	32.0	32.0	—	7.1
B120L100	3A	2012	120	363.83	363.07	—	106	343	32.0	32.0	—	8.5

H100 — 1/2" (12.70mm)

規 格	型 號	錐孔型號	齒 數									重 量
SPCFCTN	TYPE	BUSH	Z	Dp	De	Df	Dm	Di	F	S	R	Kg
B18H100F	5FB	1210	18	72.77	71.39	79	—	52	31.0	25.0	6.0	0.5
B19H100F	5FB	1210	19	76.81	75.44	83	—	56	31.0	25.0	6.0	0.6
B20H100F	5FB	1210	20	80.55	79.48	87	—	60	31.0	25.0	6.0	0.7
B21H100F	5FB	1210	21	84.89	83.52	91	—	63	32.0	25.0	7.0	0.8
B22H100F	5FB	1210	22	88.94	87.56	94	—	67	32.0	25.0	7.0	0.9
B23H100F	5FB	1210	23	92.98	91.61	102	—	70	32.0	25.0	7.0	0.9
B24H100F	5FB	1610	24	97.02	95.65	102	—	75	32.0	25.0	7.0	1.0
B25H100F	5FB	1610	25	101.06	99.69	112	—	79	32.0	25.0	7.0	1.0
B26H100F	5FB	1610	26	105.11	103.73	112	—	83	32.0	25.0	7.0	1.2
B27H100F	5FB	1610	27	109.05	107.78	120	—	87	32.0	25.0	7.0	1.3
B28H100F	5FB	1610	28	113.19	111.82	120	—	91	32.0	25.0	7.0	1.5
B30H100F	5FB	1610	30	121.28	119.90	128	—	99	32.0	25.0	7.0	1.7
B32H100F	5FW	1610	32	129.36	127.99	135	92	108	32.0	25.0	7.0	2.0
B36H100F	5FW	1610	36	145.53	144.16	158	92	124	32.0	25.0	7.0	2.7
B40H100F	5FW	1610	40	161.70	160.33	168	92	140	32.0	25.0	7.0	3.6
B44H100F	3FB	2012	44	177.87	176.50	184	106	153	32.0	32.0	—	3.8
B48H100F	3FB	2012	48	194.04	192.67	200	106	169	32.0	32.0	—	3.2
B60H100	9A	2012	60	242.55	241.18	—	106	223	34.0	32.0	1.0	4.8
B72H100	9A	2012	72	291.06	289.69	—	106	270	34.0	32.0	1.0	5.7
B84H100	9A	2012	84	339.57	338.20	—	106	318	34.0	32.0	1.0	6.8
B96H100	7A	2517	96	388.08	386.71	—	119	366	34.0	45.0	5.5	8.2

H150 — 1/2" (12.70mm)

規 格	型 號	錐孔型號	齒 數									重 量
SPCFCTN	TYPE	BUSH	Z	Dp	De	Df	Dm	Di	F	S	R	Kg
B18H150F	5FB	1210	18	72.77	71.39	79	—	53	45.0	25.0	20.0	0.6
B19H150F	5FB	1210	19	76.81	75.44	83	—	56	45.0	25.0	20.0	0.7
B20H150F	5FB	1210	20	80.55	79.48	87	—	60	45.0	25.0	20.0	0.8
B21H150F	5FB	1210	21	84.89	83.52	91	—	64	45.0	25.0	20.0	1.0
B22H150F	5FB	1210	22	88.94	87.56	94	—	68	45.0	25.0	20.0	1.2
B23H150F	5FB	1610	23	92.98	91.61	102	—	71	45.0	25.0	20.0	1.3
B24H150F	5FB	1610	24	97.02	95.65	102	—	74	45.0	25.0	20.0	1.0
B25H150F	5FB	1610	25	101.06	99.69	112	—	78	45.0	25.0	20.0	1.2
B26H150F	5FB	1610	26	105.11	103.73	112	—	82	45.0	25.0	20.0	1.4
B27H150F	5FB	1610	27	109.15	107.78	120	—	87	45.0	25.0	20.0	1.6
B28H150F	5FB	1610	28	113.19	111.82	120	—	91	45.0	25.0	20.0	1.8
B30H150F	5FB	1610	30	121.28	119.90	128	—	99	45.0	25.0	20.0	2.3
B32H150F	5FW	1610	32	129.36	127.99	135	92	108	45.0	25.0	20.0	2.3
B36H150F	5FW	1610	36	145.53	144.16	158	92	124	45.0	25.0	20.0	3.1
B40H150F	5FW	1610	40	161.70	160.33	168	92	140	45.0	25.0	20.0	4.0
B44H150F	5FW	2012	44	177.87	176.50	184	106	153	45.0	32.0	13.0	4.4
B48H150F	5FW	2012	48	194.04	192.67	200	106	169	45.0	32.0	13.0	4.8
B60H150	9A	2012	60	242.55	241.18	—	106	223	46.0	32.0	7.5	5.4
B72H150	9A	2012	72	291.06	289.69	—	106	270	46.0	32.0	7.5	6.5
B84H150	9A	2012	84	339.57	338.20	—	106	320	46.0	32.0	7.5	8.4
B96H150	9A	2517	96	388.08	386.71	—	119	366	46.0	45.0	0.5	11.0

H200 — 1/2" (12.70mm)

規 格	型 號	錐孔型號	齒 數									重 量
SPCFCTN	TYPE	BUSH	Z	Dp	De	Df	Dm	Di	F	S	R	Kg
B18H200F	5FB	1210	18	72.77	71.39	79	—	52	58.0	25.0	33.0	0.8
B19H200F	5FB	1210	19	76.81	75.44	83	—	56	58.0	25.0	33.0	0.9
B20H200F	5FB	1610	20	80.55	79.48	87	—	60	58.0	25.0	33.0	1.0
B21H200F	5FB	1610	21	84.89	83.52	91	—	64	58.0	25.0	33.0	1.7
B22H200F	5FB	1610	22	88.94	87.56	94	—	68	58.0	25.0	33.0	1.5
B23H200F	5FB	1610	23	92.98	91.61	102	—	71	58.0	25.0	33.0	1.8
B24H200F	5FB	1610	24	97.02	95.65	102	—	74	58.0	25.0	33.0	1.5
B25H200F	5FB	1610	25	101.06	99.69	112	—	78	58.0	25.0	33.0	1.5
B26H200F	5FB	1610	26	105.11	103.73	112	—	82	58.0	25.0	33.0	1.8
B27H200F	5FB	1610	27	109.15	107.78	120	—	87	58.0	25.0	33.0	1.9
B28H200F	5FB	1610	28	113.19	111.82	120	—	91	58.0	25.0	33.0	2.3
B30H200F	5FB	1610	30	121.28	119.90	128	—	99	58.0	25.0	33.0	3.0
B32H200F	5FB	2012	32	129.36	127.99	135	—	107	58.0	32.0	26.0	3.0
B36H200F	5FW	2012	36	145.53	144.16	158	102	124	58.0	32.0	26.0	3.6
B40H200F	5FW	2012	40	161.70	160.33	168	106	140	58.0	32.0	26.0	4.0
B44H200F	5FW	2012	44	177.87	176.50	184	106	153	58.0	32.0	26.0	4.6
B48H200F	5FW	2517	48	194.04	192.67	200	119	169	58.0	45.0	13.0	7.0
B60H200	9A	2517	60	242.55	241.18	—	119	223	60.0	45.0	7.5	8.0
B72H200	9A	2517	72	291.06	289.69	—	119	270	60.0	45.0	7.5	9.0
B84H200	9A	2517	84	339.57	338.20	—	119	320	60.0	45.0	7.5	10.0
B96H200	9A	2517	96	388.08	386.71	—	119	366	60.0	45.0	7.5	13.4

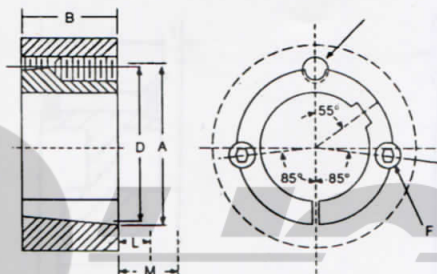
H300 — 1/2" (12.70mm)

[illegible]

XH200 — 7/8" (22.22mm)

[illegible]

1008 thru 3030 Sizes



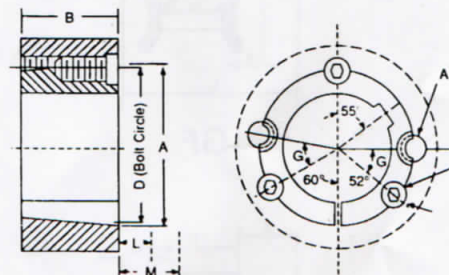
Dimension for 1008 thru
3030 TAPER-LOCK Bushings

錐套型號 BUSH NO.	大端直徑 A	寬度 B	中心圓 D	螺栓規格 SET SCREWS
1008	1.386	7/8	1-21/64	1/4 x 1/2
1108	1.511	7/8	1-29/64	1/4 x 1/2
1210	1-7/8	1	1-3/4	3/8 x 5/8
1215	1-7/8	1-1/2	1-3/4	3/8 x 5/8
1310	2	1	1-7/8	3/8 x 5/8
1610	2-1/4	1	2-1/8	3/8 x 5/8
1615	2-1/4	1-1/2	2-1/8	3/8 x 5/8
2012	2-3/4	1-1/4	2-5/8	7/16 x 7/8
2517	3-3/8	1-3/4	3-1/4	1/2 x 1
2525	3-3/8	2-1/2	3-1/4	1/2 x 1
3020	4-1/4	2	4	5/8 x 1-1/4
3030	4-1/4	3	4	5/8 x 1-1/4

Dimension for 3535 thru
5050 TAPER-LOCK Bushings

錐套型號 BUSH NO.	A	B	D	螺栓規格 SET SCREWS	G
3535	5"	3-1/2"	4.83	1/2 x 1-1/2	40°
4040	5-3/4"	4"	5.54	5/8 x 1-3/4	40°
4545	6-3/8"	4-1/2"	6.13	3/4 x 2	40°
5050	7"	5"	6.72	7/8 x 2-1/4	37°

3535 thru 5050 Sizes



錐套內孔使用規格

STANDARD STOCK BORES METRIC SERIES

錐套型號 BUSH NO.	錐套內孔規格 BORE
1008	10. 11. 12. 14. 15. 16. 18. 19. 20. 22. 24. 25.
1108	10. 11. 12. 14. 15. 16. 18. 19. 20. 22. 24. 25. 28.
1210 1215	11. 12. 14. 15. 16. 18. 19. 20. 22. 24. 25. 28. 30. 32.
1310	14. 15. 16. 18. 19. 20. 22. 24. 25. 28. 30. 32. 35.
1610 1615	14. 15. 16. 18. 19. 20. 22. 24. 25. 28. 30. 32. 35. 38. 40. 42.
2012 2017	18. 19. 20. 22. 24. 25. 28. 30. 32. 35. 38. 40. 42. 45. 48. 50.
2517 2525	20. 22. 24. 25. 28. 30. 32. 35. 38. 40. 42. 45. 48. 50. 55. 60.
3020 3030	25. 28. 30. 32. 35. 38. 40. 42. 45. 48. 50. 55. 60. 65. 70. 75.
3525 3535	35. 38. 40. 42. 45. 48. 50. 55. 60. 65. 70. 75. 80. 85. 90.
4030 4040	40. 42. 45. 48. 50. 55. 60. 65. 70. 75. 80. 85. 90. 95. 100.
4535 4545	55. 60. 65. 70. 75. 80. 85. 90. 95. 100. 105. 110.
5040 5050	60. 65. 70. 75. 80. 85. 90. 95. 100. 105. 110. 115. 120. 125.

注：英寸內孔請參考有關樣本尺寸。 The dimensions in inch of inner bore please refer to the catalogue of Taper-Lock Bushing